

ARIZONA DEPARTMENT OF TRANSPORTATION  
205 SOUTH 17TH AVENUE  
R/W Operations, MD 612E  
PHOENIX, AZ 85007-3213

APRIL 18, 2008

RES. NO. 2008-04-A-016  
PROJECT: S-085-B-700 / 085MA120H567501R  
S-085-B-701 / 085MA138H567502R  
HIGHWAY: GILA BEND - BUCKEYE  
SECTION: Gila Bend - Lewis Prison  
Lewis Prison - Gila River  
ROUTE NO.: State Route 85  
ENG. DIST.: Yuma  
COUNTY: Maricopa

RESOLUTION OF ESTABLISHMENT

VICTOR M. MENDEZ, Director, Arizona Department of Transportation, on April 18, 2008, presented and filed with this Transportation Board his written report under Arizona Revised Statutes Section 28-7046, recommending the establishment and acquisition of additional right of way for the improvement of a portion of State Route 85 as set forth in the above referenced project.

The additional right of way to be established and acquired for this improvement is depicted in Appendix "A" and delineated on maps and plans on file in the office of the State Engineer, Intermodal Transportation Division, Phoenix, Arizona, entitled "Right of Way Plans, GILA BEND - BUCKEYE, Highway, Project S-085-B-700 / 085MA120H567501R, S-085-B-701 / 085MA138H567502R."

WHEREAS establishment and acquisition of the additional right of way is necessary for this improvement; and

WHEREAS because of these premises, this Board finds public safety, necessity and convenience require the recommended establishment and acquisition of the additional land needed for this improvement and that access to the highway shall be controlled as delineated on the maps and plans; therefore, be it

RESOLVED that the recommendation of the Director is adopted and made part of this resolution; be it further

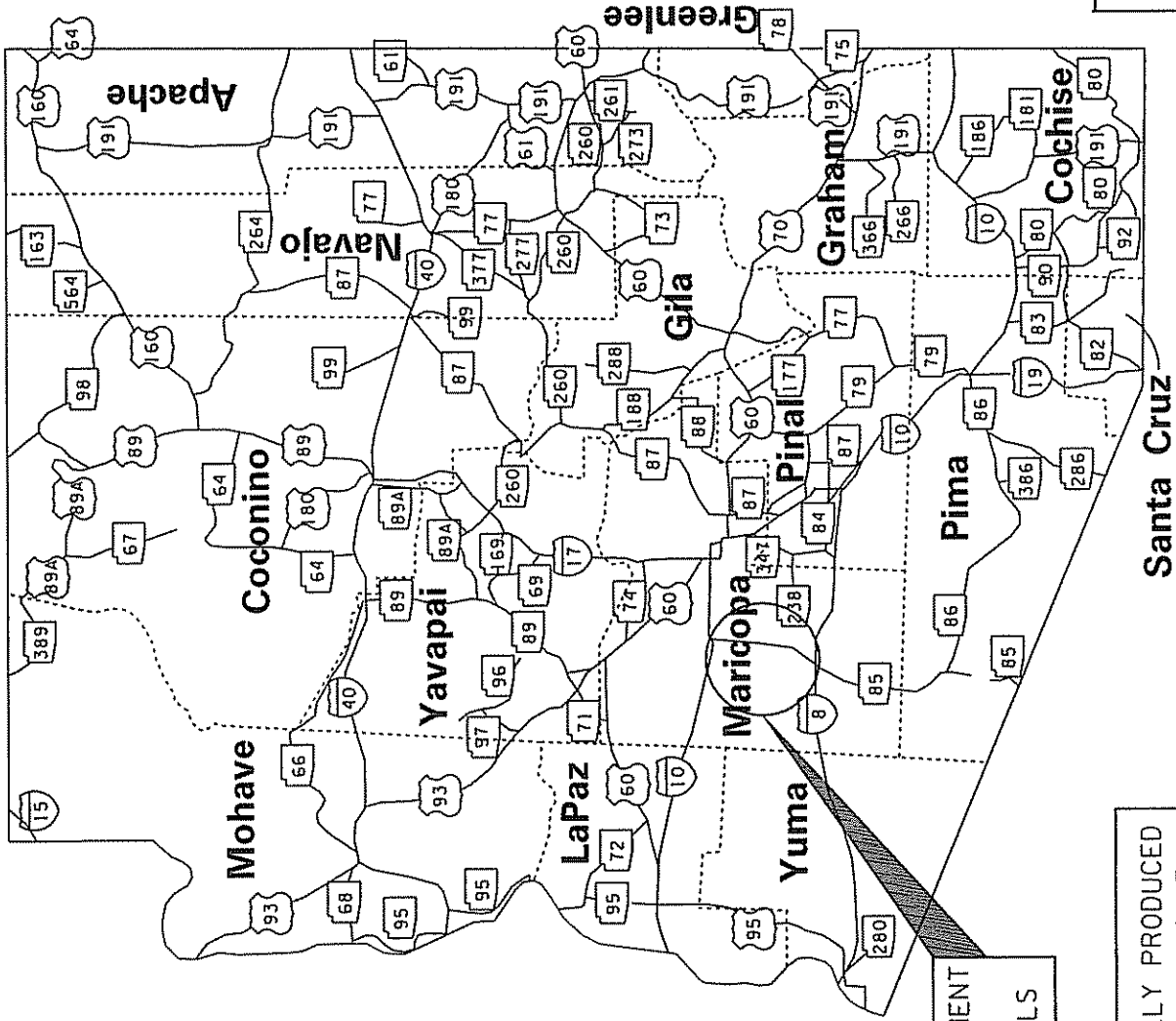
APRIL 18, 2008

RES. NO. 2008-04-A-016  
PROJECT: S-085-B-700 / 085MA120H567501R  
S-085-B-701 / 085MA138H567502R  
HIGHWAY: GILA BEND - BUCKEYE  
SECTION: Gila Bend - Lewis Prison  
Lewis Prison - Gila River  
ROUTE NO.: State Route 85  
ENG. DIST.: Yuma  
COUNTY: Maricopa

RESOLVED that the additional areas of right of way as set forth in Appendix "A" are designated a controlled access state route and state highway, and ingress and egress to and from the highway and to and from abutting, adjacent, or other lands be denied, controlled, or regulated as indicated by the maps and plans. Where no access is shown, none will be allowed to exist; be it further

RESOLVED that the Director is hereby authorized to acquire by lawful means, including exchanges, in accordance with Arizona Revised Statutes Section 28-7092, an estate in fee, or such other interest as is required, including material for construction, haul roads, and various easements in any property necessary for or incidental to the improvements as delineated on said maps and plans; be it further

RESOLVED that the Director secure an appraisal of the property to be acquired and that necessary parties be compensated. Upon failure to acquire said lands by other lawful means, the Director is authorized to initiate condemnation proceedings.



AREA OF ESTABLISHMENT  
SEE SHEETS 2, 3,  
& 4 OF 4 FOR DETAILS

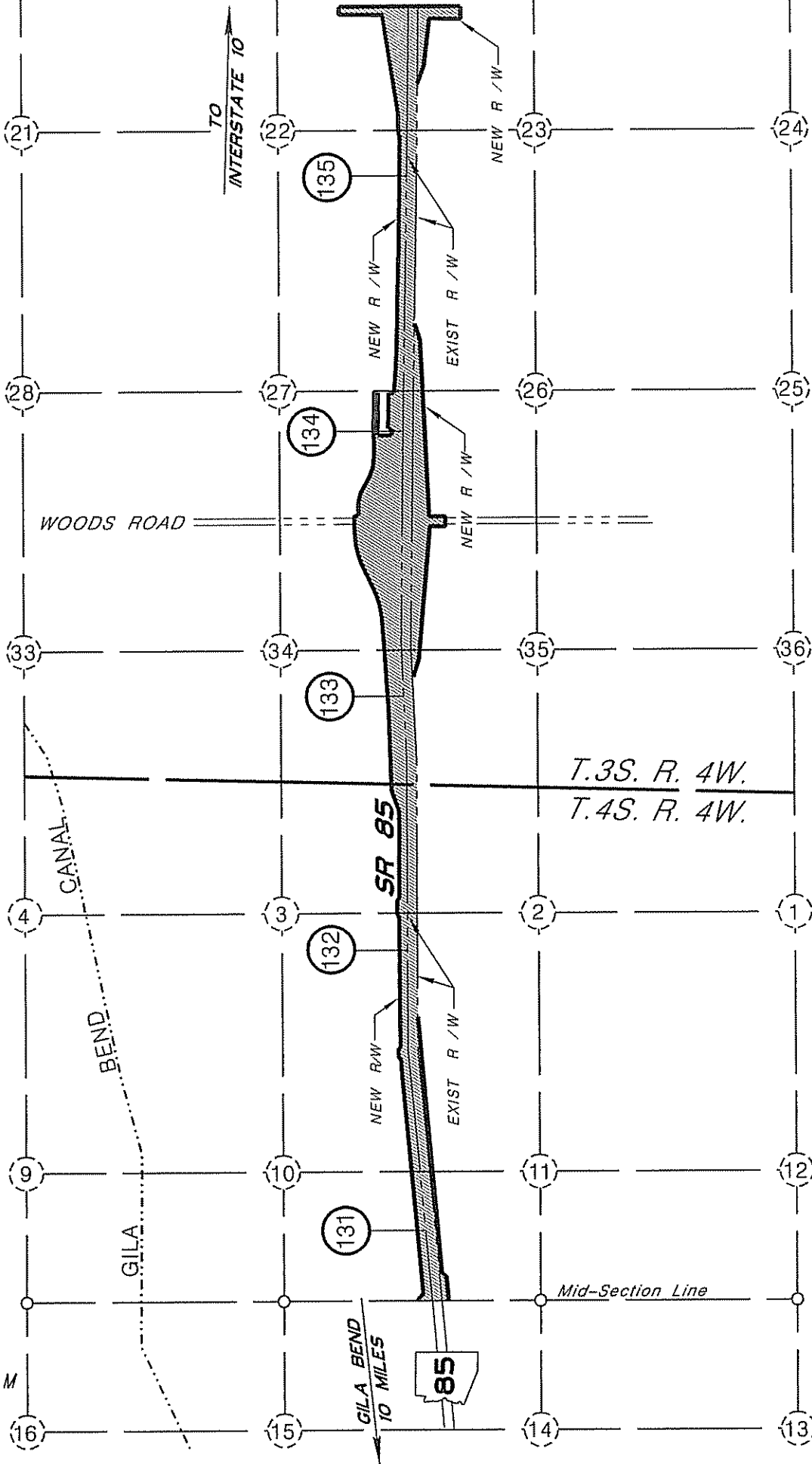
THIS PLAT WAS DIGITALLY PRODUCED  
FROM ARIZONA DEPARTMENT OF  
TRANSPORTATION  
GENERAL HIGHWAY MAP  
RIGHT OF WAY PLANS SECTION  
REVISED MAY 17, 2000

085 MA 120 H5675 01R/S-085-B-700  
085 MA 138 H5675 02R/S-085-B-701  
GILA BEND - BUCKEYE HIGHWAY  
Gila Bend - Lewis Prison  
Lewis Prison - Gila River  
Maricopa County

**APPENDIX "A"**




District M



085 MA 120 H5675 01R/S-085-B-700  
 085 MA 138 H5675 02R/S-085-B-701  
 GILA BEND - BUCKEYE HIGHWAY  
 Gila Bend - Lewis Prison  
 Lewis Prison - Gila River  
 Maricopa County

DATE: APRIL 18, 2008 SHEET: 2 OF 4

 AREA OF ESTABLISHMENT

**APPENDIX "A"**

THIS PLAT WAS DIGITALLY PRODUCED FROM ARIZONA DEPARTMENT OF TRANSPORTATION GENERAL HIGHWAY MAP

RIGHT OF WAY PLANS SECTION  
 REVISED JULY 17, 2000



District M

Mid-Section Line

PATTERSON ROAD

138

3

LEWIS PRISON

137

10

136

15

NEW R/W

SR 85

NEW R/W

GILA BEND  
1/6 MILES

16

EXIST R/W

2

LEWIS PRISON

NEW R/W

T.2S. R. 4W.  
T.3S. R. 4W.

139

34

NEW R/W

SR 85

RIGGS ROAD

140

NEW R/W

27

26

MATCH LINE SHEET 4

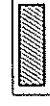
25

36

THIS PLAT WAS DIGITALLY PRODUCED  
FROM ARIZONA DEPARTMENT OF  
TRANSPORTATION  
GENERAL HIGHWAY MAP

RIGHT OF WAY PLANS SECTION  
REVISED JULY 17, 2000

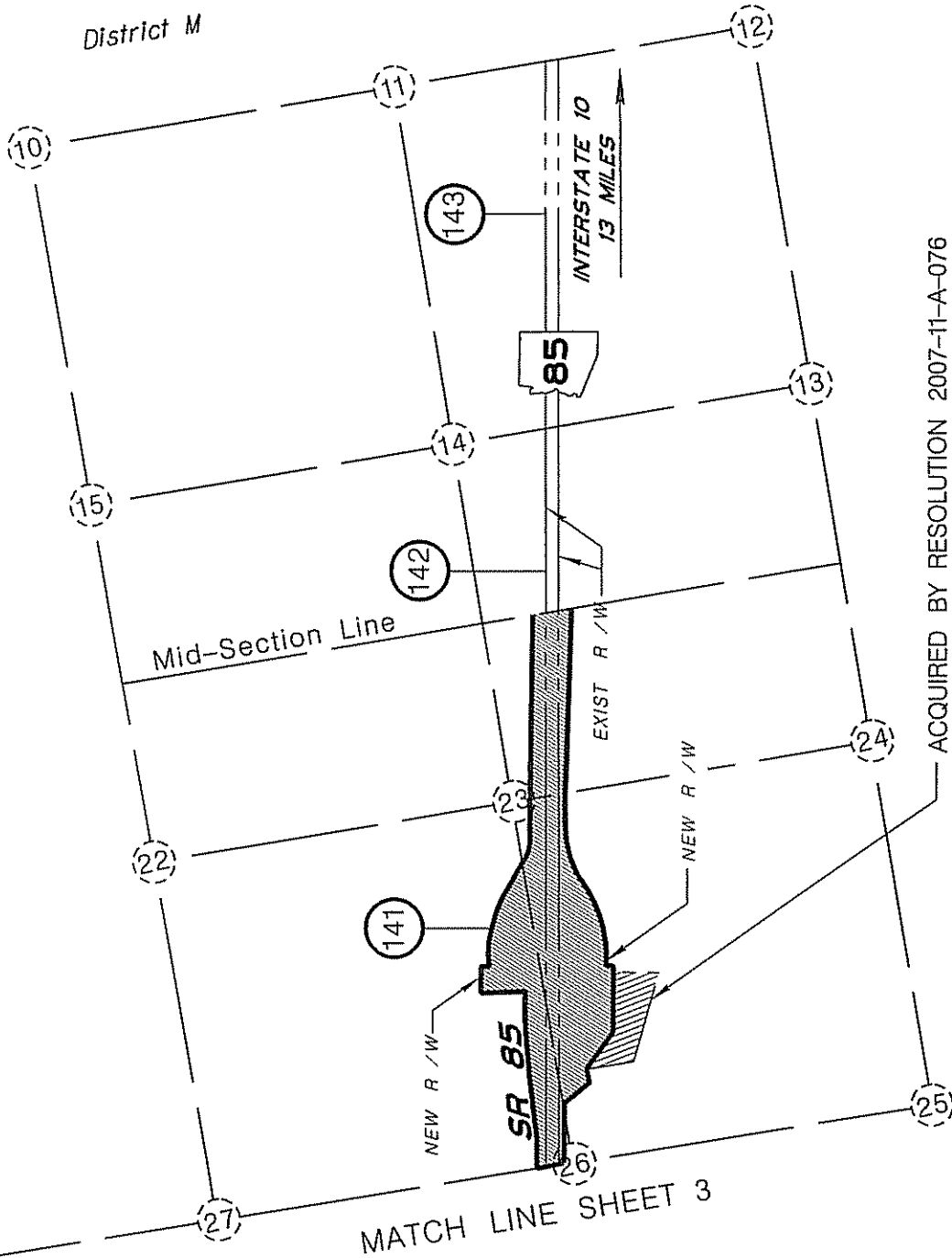
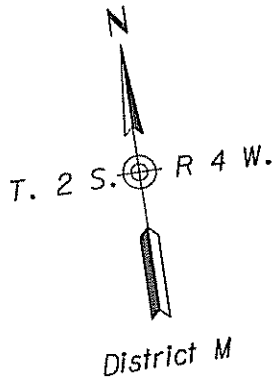
AREA OF  
ESTABLISHMENT



APPENDIX "A"

085 MA 120 H5675 01R/S-085-B-700  
085 MA 138 H5675 02R/S-085-B-701  
GILA BEND - BUCKEYE HIGHWAY  
Gila Bend - Lewis Prison  
Lewis Prison - Gila River  
Maricopa County

DATE: APRIL 18, 2008 SHEET: 3 OF 4



ACQUIRED BY RESOLUTION 2007-11-A-076  
 DATED NOVEMBER 16, 2007

085 MA 120 H5675 01R/S-085-B-700  
 085 MA 138 H5675 02R/S-085-B-701  
 GILA BEND - BUCKEYE HIGHWAY  
 Gila Bend - Lewis Prison  
 Lewis Prison - Gila River  
 Maricopa County

AREA OF  
 ESTABLISHMENT

**APPENDIX "A"**

THIS PLAT WAS DIGITALLY PRODUCED  
 FROM ARIZONA DEPARTMENT OF  
 TRANSPORTATION  
 GENERAL HIGHWAY MAP  
 REVISION JULY 17, 2000

RIGHT OF WAY PLANS SECTION  
 REVISED JULY 17, 2000

DATE: APRIL 18, 2008 SHEET: 4 OF 4

APRIL 18, 2008

RES. NO. 2008-04-A-016  
PROJECT: S-085-B-700 / 085MA120H567501R  
S-085-B-701 / 085MA138H567502R  
HIGHWAY: GILA BEND - BUCKEYE  
SECTION: Gila Bend - Lewis Prison  
Lewis Prison - Gila River  
ROUTE NO.: State Route 85  
ENG. DIST.: Yuma  
COUNTY: Maricopa

REPORT AND RECOMMENDATION

TO THE HONORABLE ARIZONA TRANSPORTATION BOARD:

The Intermodal Transportation Division has made a thorough investigation concerning the establishment and improvement of a portion of State Route 85 within the above referenced project.

This portion was previously established as a state route and state highway designated U.S. Route 80 by Arizona Highway Commission Resolution dated September 9, 1927, page 26 of the Official Minutes; various Resolutions established additional right of way for improvements thereof; thereafter Arizona Transportation Board Resolution 77-16-A-48, dated September 16, 1977, redesignated and renumbered U.S. Route 80 to State Route 85; Resolution 78-17-A-58, dated October 20, 1978, redesignated a portion of State Route 85 to State Route 85 Spur; Resolution 94-11-A-63, dated November 18, 1994, redesignated State Route 85 Spur to State Route 85; Resolutions 01-07-A-048, dated July 13, 2001, 04-03-A-012, dated March 19, 2004, 05-04-A-028, dated April 15, 2005 and Resolution 07-06-A-047, dated June 15, 2007 established additional right of way as an access controlled state route and state highway for improvements thereof.

The additional right of way for widening improvements to enhance safety for the traveling public is now ready to be established into the State Highway System for the upcoming construction phase. Accordingly, it is necessary to establish and acquire the additional right of way for this improvement.

APRIL 18, 2008

RES. NO. 2008-04-A-016  
PROJECT: S-085-B-700 / 085MA120H567501R  
S-085-B-701 / 085MA138H567502R  
HIGHWAY: GILA BEND - BUCKEYE  
SECTION: Gila Bend - Lewis Prison  
Lewis Prison - Gila River  
ROUTE NO.: State Route 85  
ENG. DIST.: Yuma  
COUNTY: Maricopa

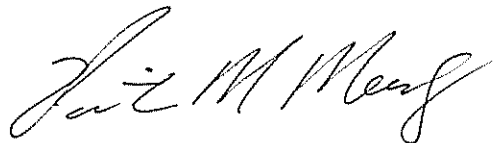
The additional right of way to be established and acquired for this improvement is depicted in Appendix "A" and delineated on maps and plans on file in the office of the State Engineer, Intermodal Transportation Division, Phoenix, Arizona, entitled "Right of Way Plans, GILA BEND - BUCKEYE Highway, Project S-085-B-700 / 085MA120H567501R, S-085-B-701 / 085MA138H567502R."

In the interest of public safety, necessity and convenience, I recommend that the area depicted in Appendix "A" be established and improved as a state route and state highway, and that access be controlled.

I further recommend the acquisition of the new right of way, material for construction, haul roads and various easements necessary for or incidental to the improvement.

Pursuant to Arizona Revised Statutes Section 28-7046, I recommend the adoption of a resolution making this recommendation effective.

Respectfully submitted,



VICTOR M. MENDEZ, Director  
Arizona Department of Transportation



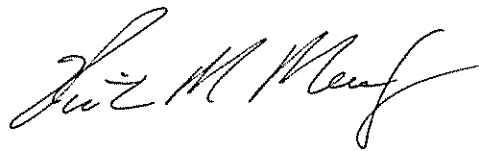
APRIL 18, 2008

RES. NO. 2008-04-A-016  
PROJECT: S-085-B-700 / 085MA120H567501R  
S-085-B-701 / 085MA138H567502R  
HIGHWAY: GILA BEND - BUCKEYE  
SECTION: Gila Bend - Lewis Prison  
Lewis Prison - Gila River  
ROUTE NO.: State Route 85  
ENG. DIST.: Yuma  
COUNTY: Maricopa

CERTIFICATION

I, VICTOR M. MENDEZ, Director of the Arizona Department of Transportation, do hereby certify that the foregoing is a true and correct copy from the minutes of the Transportation Board made in official session on April 18, 2008.

IN WITNESS WHEREOF I have hereunto set my hand and the official seal of the Transportation Board on April 18, 2008.



VICTOR M. MENDEZ, Director  
Arizona Department of Transportation

STATE OF ARIZONA  
DEPARTMENT OF TRANSPORTATION  
APR 18 2008  
STW